

Floor Rails

A useful option for your automatic doors



There are various reasons for considering the installation of floor rails. Primarily designed for challenging environments, it ensures record-typical characteristics throughout the operational life of your door system.

Enhances operational reliability, reduces drafts and provides burglar protection

Although we provide floor rails as an option, many of our service engineers consider them as indispensable to rounding out our automatic door installations. Floor rails allow us to guide the closing edges of the door leaves more precisely, thus making the door system immune to increased wind loads. This factor becomes increasingly important the larger the opening width and height of the door.

In addition to pressure exerted on the door by strong gusts of wind affecting vertical stability, it is mainly the sealing of the underside that is problematic without floor rails. In addition to the considerable noise caused by drafts, a permanent heat exchange takes place, leading to unnecessarily increased air conditioning costs.

Fitting a floor rail that extends over almost the entire length of the door screens enables a continuous blade to be



attached to the surface, greatly reducing drafts. Bristles attached on both sides of the blade act additionally as seals, affecting the smooth running of the door installation only slightly.

Natural stone floors are often uneven. To ensure the free movement of the door, the installation of a floor rail is the best solution, as well as being the most elegant. The sealing of the door edge

is inevitably improved as well, as poor floor quality or uneven surfaces do not have to be taken into account. This directly benefits the operating characteristics of your door system.

However, additional guiding points on the underside of the door leaves are just a first step in enhancing burglar protection. The continuous door blades made of toughened aluminium provide basic protection against burglary attempts. Another option that ideally complements this is multi-point locking (MPV).



In areas where temperatures frequently drop below -10°C , the floor rail must be heated to prevent freezing by infiltration of melt water or condensation. At the planning stage, consideration should be given to a suitable electrical supply as well as to drainage.

agta-record.com

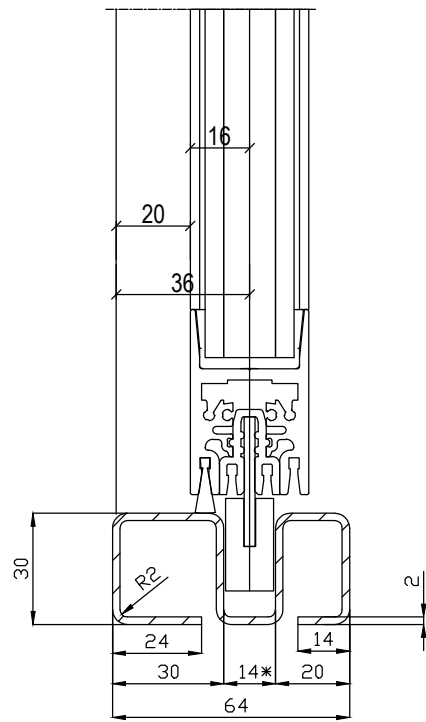


record

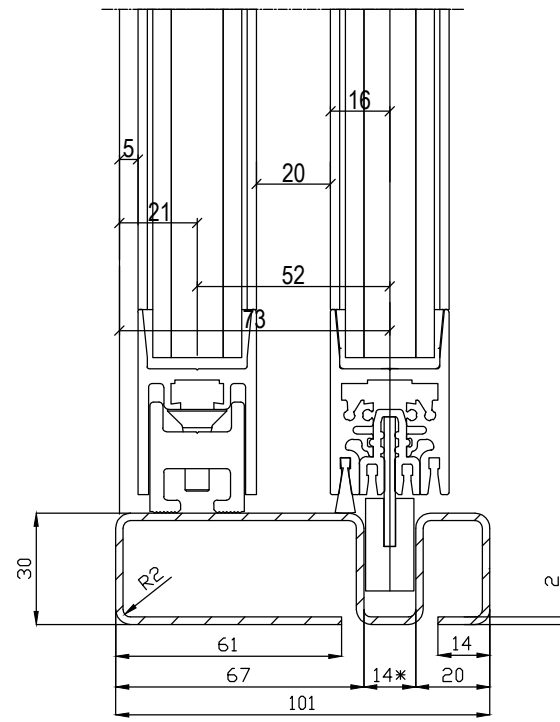
your global partner for entrance solutions

agta record ltd – Allmendstrasse 24 – 8320 Fehraltorf – Switzerland

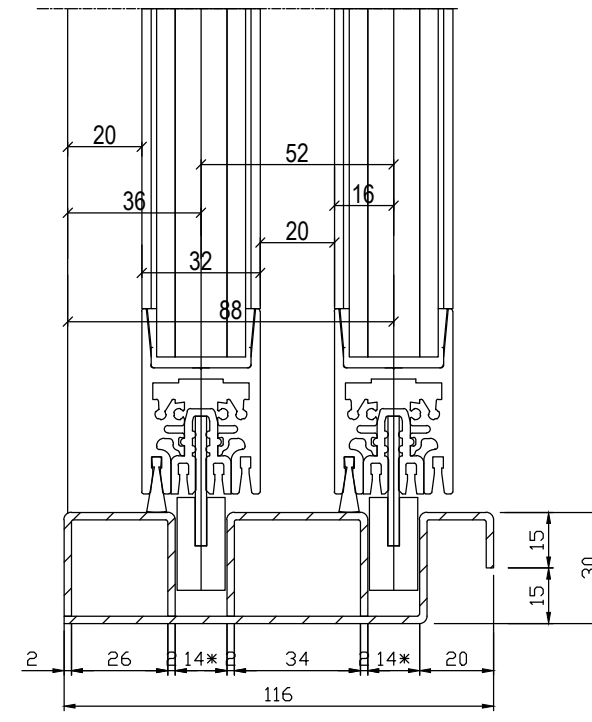
Tel.: +41 44 954 91 91 – e-mail: info@agta-record.com – web: www.agta-record.com



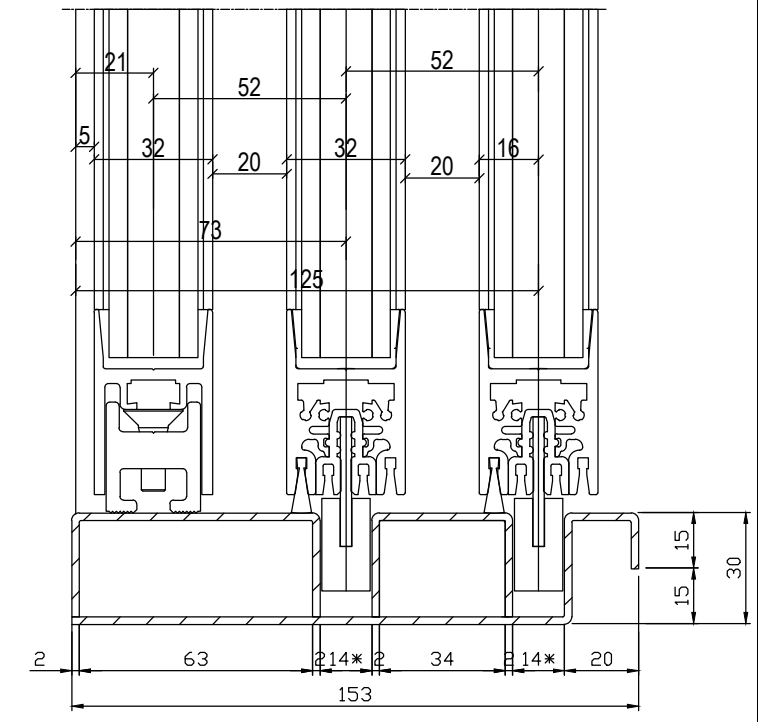
TYP A - 1 (375.113.576)
STA / TOS without SS



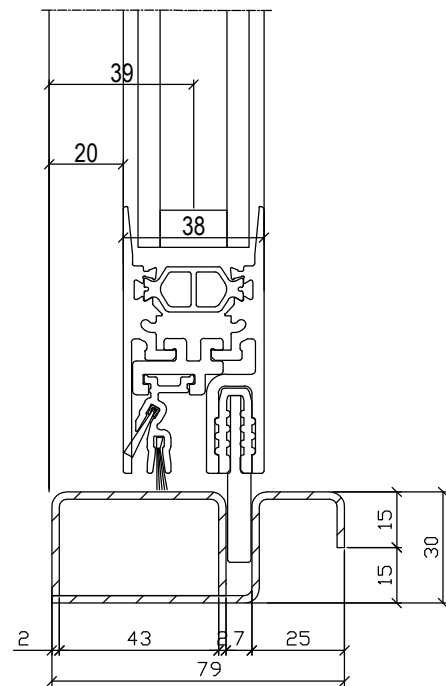
TYP B - 1 (375.113.579)
STA / TOS with SS



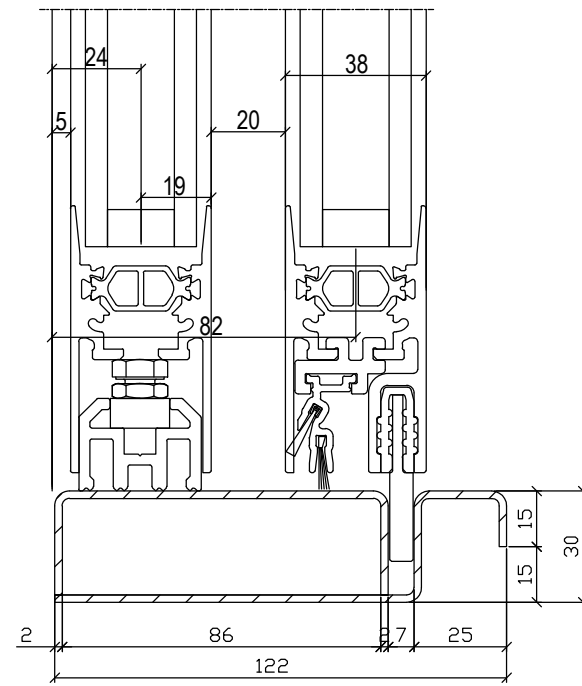
TYP C - 1 (375.109.942)
TSA without SS



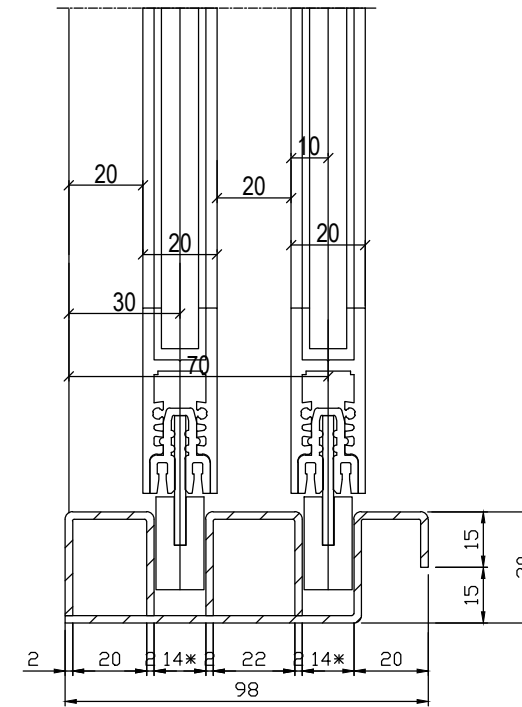
TYP D - 1 (375.109.943)
TSA with SS



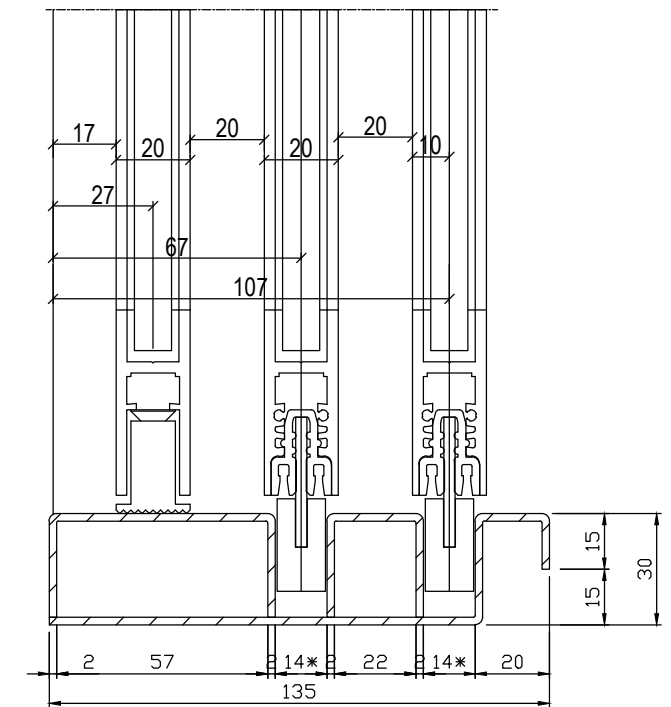
TYP E - 2 (376.114.641)
THERMCORD without SS



TYP F - 2 (376.114.504)
THERMCORD with SS




TYP G - 1 (375.109.944)
TSA without SS



TYP H - 1 (375.109.945)
TSA with SS

* 14mm +/- 0.5

IB Nr:	Farbe:	01.07.15	rmu	
Kunde:		Msst:	1:2	
Kom.:	Floor rail STA 20 Detail sections			STA 20
ADM:	© 2004, record Türautomation AG, CH-8320 Fehraltorf			