

Floor mat PURUS

Technical data sheets



record

your global partner for entrance solutions

agta-record.com

1 Floor mats Purus

Thanks to the versatility of the system components - grid and filler variants - the floor mat can be configured individually and ensures highest efficiency and functionality. Both the place of installation and the type of dirt expected determine which type of grid to use, all of which are available in different heights and thicknesses. The grid and filler are combined appropriately and then are precisely manufactured according to the project specifications. This modular construction system provides an appropriate solution for every requirement.

1.1 Floor mats Purus with ribbed carpet insert

Floor mats of this type are made from rigid aluminium with sound insulation underlay. Recessed, robust and weather-proof ribbed carpet strips are fitted into the surface. The material has a R11 slip resistance as per DIN 51130.

This floor mats are ideal for removing fine dirt and can be used both indoors and in covered outdoor areas. It has the drive- and roll-over capability for rollers.



1.1.1 Standard colours

Light grey



Anthracite



Beige



Blue



1.1.2 Special colours

Mauve



Blue/grey



Brown



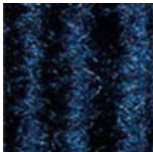
Red



Turquoise



Royal blue



Sand



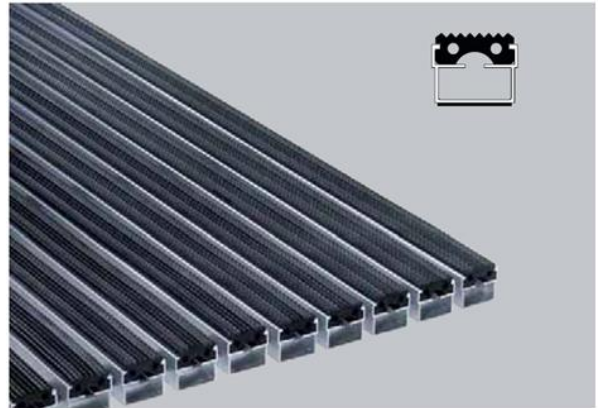
Grape



1.2 Floor mats Purus with ribbed carpet and rubber insert

Floor mats of this type are made from rigid aluminium with sound insulation underlay. Recessed, robust and weather-proof ribbed carpet strips, combined with profiled rubber inserts are fitted into the surface. The material has a R11 slip resistance (ribbed carpet) and R9 (rubber insert) as per DIN 51130.

This floor mats are ideal for removing coarse and fine dirt and can be used both indoors and in covered outdoor areas. It has the drive- and roll-over capability for rollers.

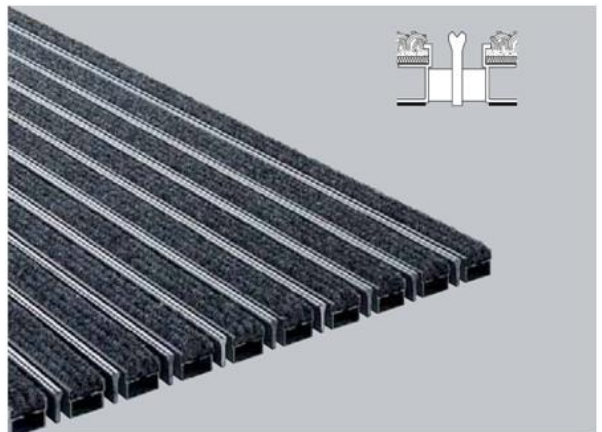


1.3 Floor mats Purus with ribbed carpet insert and scraper bar

Additional scraper bar between the profiles for extra cleaning effect.

In combination with rubber strips for outdoor areas, and in combination with carpet strips for indoor and covered outdoor areas.

The material has a R10 slip resistance (ribbed carpet) and R9 (rubber insert) as per DIN 51130. Floor mats with scraper bar have the drive- and roll-over capability for rollers only to a limited extent.

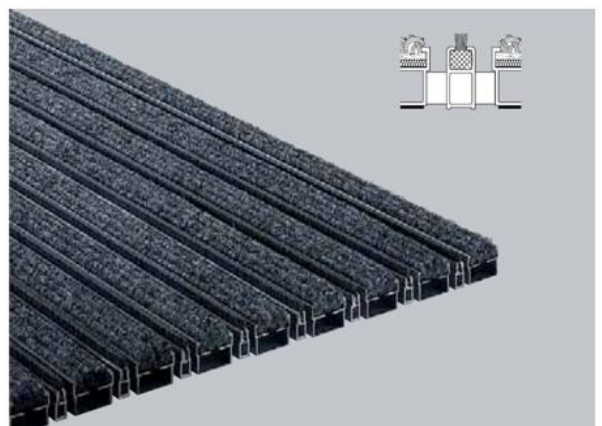


1.4 Floor mats Purus with ribbed carpet insert and cassette brush

Ribbed carpet strips with additional cassette sections equipped with brush bundles between the profiles for extra cleaning effect.

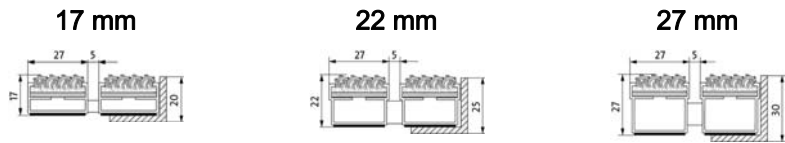
In combination with rubber strips for outdoor areas, and in combination with carpet strips for indoor and covered outdoor areas.

The material has a R11 slip resistance (ribbed carpet) and R9 (rubber insert) as per DIN 51130. Floor mats with cassette brush have the drive- and roll-over capability for rollers only to a limited extent.



2 Technical data sheets floor mats Purus

2.1 Purus with ribbed carpet insert



Type	Standard-Profile-Distance ¹⁾ (mm)	Approx. Height (mm)	Weight (kg/m ²)	Installation frame		
				Frame type	Dimensions in mm (H x W x D)	Material
17 mm	5	17	9,2	500/20	20 x 30 x 3	Aluminium
					20 x 25 x 3	Stainless steel
22 mm	5	22	10,0	500/25	25 x 28 x 3	Aluminium
					25 x 25 x 3	Natural brass
					25 x 30 x 3	Stainless steel ²⁾
27 mm	5	27	10,5	500/30	30 x 30 x 3	Aluminium
					30 x 30 x 3	Natural brass
					30 x 25 x 3	Stainless steel ²⁾

1) Rubber spacer

2) Chrome-Nickel-Steel, Material-No. 1.4301 (V2A)



2.2 Purus with ribbed carpet insert and cassette brush



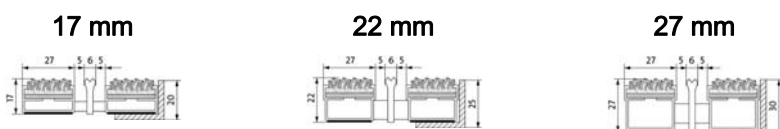
Type	Standard-Profile-Distance ¹⁾ (mm)	Approx. Height (mm)	Weight (kg/m ²)	Installation frame		
				Frame type	Dimensions in mm (H x B x T)	Material
17 mm	5	17	10,1	500/20	20 x 30 x 3	Aluminium
					20 x 25 x 3	Stainless steel
22 mm	5	22	11,8	500/25	25 x 28 x 3	Aluminium
					25 x 25 x 3	Natural brass
					25 x 30 x 3	Stainless steel ²⁾

1) Rubber spacer

2) Chrome-Nickel-Steel, Material-No. 1.4301 (V2A)



2.3 Purus with ribbed carpet insert and scraper bar



Type	Standard-Profile-Distance ¹⁾ (mm)	Approx. Height (mm)	Weight (kg/m ²)	Installation frame		
				Frame type	Dimensions in mm (H x B x T)	Material
17 mm	5	17	10,3	500/20	20 x 30 x 3 20 x 25 x 3	Aluminium Stainless steel
22 mm	5	22	12,3	500/25	25 x 28 x 3 25 x 25 x 3 25 x 30 x 3	Aluminium Natural brass Stainless steel ²⁾
27 mm	5	27	13,0	500/30	30 x 30 x 3 30 x 30 x 3 30 x 25 x 3	Aluminium Natural brass Stainless steel ²⁾

¹⁾ Rubber spacer

²⁾ Chrome-Nickel-Steel, Material-No. 1.4301 (V2A)



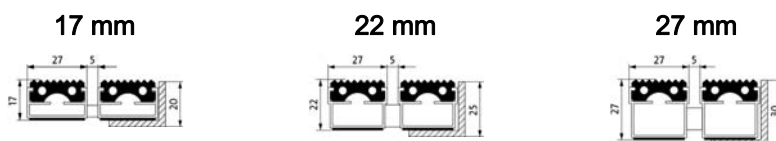
2.4 Text for invitation to tender (with ribbed carpet insert)

Recommendation:	Indoor and covered outdoor areas	Slip resistance:	Slip resistance R 11 as per DIN 51130
Load:	normal to heavy	Colours:	Standard: Light grey, Anthracite, Beige, Blue; Special colours available: Mauve, Blue/grey, Red, Brown, Turquoise, Royal blue, Sand and Grape.
Description:	Roll-up, extremely hard-wearing entrance mat for laying on the floor. Mats produced to fit width and walking depth specifications perfectly, without the need for alignment profiles. Any geometric shape is available.	Fire protection:	Ribbed carpet colours grey and anthracite available with flammability in accordance with European standard C _{fl} -s ₁ (formerly B1) (tested by the Textiles & Flooring Institute GmbH)
Footfall:	Footfall of up to 2000/day	Connection:	Plastic-coated steel cable
Roll-over and drive-over capability:	Wheelchairs, Prams, (Shopping trolleys), hand trolleys	Automatic door systems:	Profile clearance of 3 mm available as an option for revolving door drives, in accordance with EN 16005
Support chassis:	Made from rigid aluminium with sound insulation underlay		
Tread surface:	Recessed, robust, weather-proof, ribbed carpet strips combined with cassette sections, equipped with brush bundles with additional scraper bars mounted between the profiles		





2.5 Purus with rubber insert



Type	Standard-Profile-Distance ¹⁾ (mm)	Approx. Height (mm)	Weight (kg/m ²)	Installation frame		
				Frame type	Dimensions in mm (H x B x T)	Material
17 mm	5	17	14,4	500/20	20 x 30 x 3	Aluminium
					20 x 25 x 3	Stainless steel
22 mm	5	22	14,3	500/25	25 x 28 x 3	Aluminium
					25 x 25 x 3	Natural brass
					25 x 30 x 3	Stainless steel ²⁾
27 mm	5	27	17,0	500/30	30 x 30 x 3	Aluminium
					30 x 30 x 3	Natural brass
					30 x 25 x 3	Stainless steel ²⁾

1) Rubber spacer

2) Chrome-Nickel-Steel, Material-No. 1.4301 (V2A)



2.6 Purus with rubber insert and cassette brush



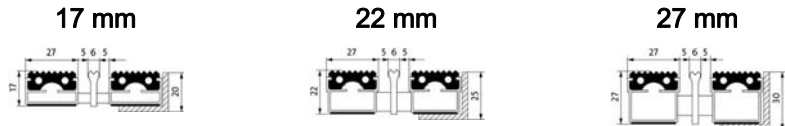
Type	Standard-Profile-Distance ¹⁾ (mm)	Approx. Height (mm)	Weight (kg/m ²)	Installation frame		
				Frame type	Dimensions in mm (H x B x T)	Material
17 mm	5	17	15,2	500/20	20 x 30 x 3	Aluminium
					20 x 25 x 3	Stainless steel
22 mm	5	22	14,9	500/25	25 x 28 x 3	Aluminium
					25 x 25 x 3	Natural brass
					25 x 30 x 3	Stainless steel ²⁾

1) Rubber spacer

2) Chrome-Nickel-Steel, Material-No. 1.4301 (V2A)



2.7 Purus with rubber insert and scraper bar



Type	Standard-Profile-Distance ¹⁾ (mm)	Approx. Height (mm)	Weight (kg/m ²)	Installation frame		
				Frame type	Dimensions in mm (H x B x T)	Material
17 mm	5	17	16,5	500/20	20 x 30 x 3	Aluminium
					20 x 25 x 3	Stainless steel
22 mm	5	22	15,7	500/25	25 x 28 x 3	Aluminium
					25 x 25 x 3	Natural brass
					25 x 30 x 3	Stainless steel ²⁾
27 mm	5	27	17,1	500/30	30 x 30 x 3	Aluminium
					30 x 30 x 3	Natural brass
					30 x 25 x 3	Stainless steel ²⁾

¹⁾ Rubber spacer

²⁾ Chrome-Nickel-Steel, Material-No. 1.4301 (V2A)



2.8 Text for invitation to tender (with rubber insert)

Recommendation:	Outdoor areas	Slip resistance:	Slip resistance R 9 as per DIN 51130
Load:	Normal to heavy	Colours:	black
Description:	Roll-up, extremely hard-wearing entrance mat for laying on the floor. Mats produced to fit width and walking depth specifications perfectly, without the need for alignment profiles. Any geometric shape is available.	Fire protection:	Flammability in accordance with B _{fl} -s ₁ (Formerly B1) (tested by the Textiles & Flooring Institute GmbH)
Footfall:	Daily footfall of up to 2000/Day	Connection:	Plastic-coated steel cable
Roll-over and drive-over capability:	Wheelchairs, Prams, (Shopping trolleys), hand trolleys	Automatic door systems:	Profile clearance of 3 mm available as an option for revolving door drives, in accordance with EN 16005
Support chassis:	Made from rigid aluminium with sound insulation underlay		
Tread surface	Recessed, robust, weather-proof, ribbed carpet strips, combined with profiled rubber inserts		
	<p style="margin-left: 40px;">With additional cassette sections, equipped with brush bundles</p> <p style="margin-left: 40px;">With additional scraper bars mounted between the profiles</p>		



3 Care and cleaning

Floor mats are designed so that most dirt falls between the gaps onto the matwell base. A regular care and cleaning programme is however recommended to improve the cleaning result and increase the life of the mat. Cleaning intervals and equipment used will depend on the nature and degree of soiling.

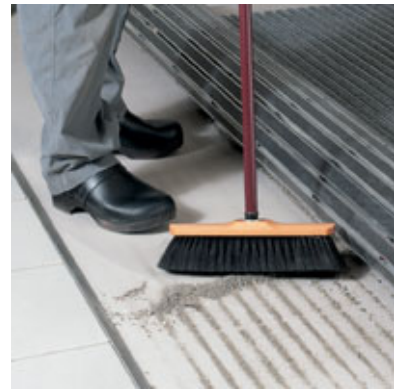
Slight soiling:

Depending on the degree, we recommend that the entrance matting be cleaned with a high-pressure vacuum.



Medium soiling:

After vacuuming and rolling up, the matting and matwell base should be swept with a brush.



Heavy soiling:

After vacuuming and cleaning the matwell base, the matting can be sprayed with a jet wash (distance min. 30 cm). The matting can be refitted after being hung up to dry for a short time.

It is also possible to clean the matting with a standard floor cleaning machine (e.g. Duplex).



4 Replacement with new rib system

It is not always possible to avoid cigarette burns, chewing gum or oil stains in the entrance area. Furthermore with millions of footfalls onto the surface of the mat, it will have to be replaced some day.

The replacement rib system significantly increases the cost-effectiveness of the floor mats. The aluminium mat chassis remains, only the carpet ribs are changed.

Please talk to us about it!

Procedure:

1. Remove the old ribs by hand.
2. Clean the aluminium mat chassis of any dirt or rib remnants.
3. A few taps with a rubber mallet accurately positions the rib into its aluminium support. Cut off any ribs that protrude from the profile.



TEST CERTIFICATE

on the testing result of the anti-slip properties of floor coverings in workrooms and fields of activities

Examined material type: **Entrance mat with coarse haired rep surface**
Article description: **EMCO Diplomat 522R**
(According to specifications, the surface is identical to Diplomat 517R; Diplomat 527R; Marschall 517S/R; Marschall 522S/R; Consul 522E/R; Plaza 542 S/R)

Dimensions of the test specimen: **1000 x 500 x 22 mm**
Colour: **anthracite**
(According to specifications selection of standard colours possible)

Surface: **profiled** (Profile covering: coarse haired rep)

Manufacturer/Supplier: **EMCO Bau- und Klimatechnik GmbH & Co. KG
Breslauer Straße 34-38
49803 Lingen/Ems**

Client: **EMCO Bau- und Klimatechnik GmbH & Co. KG
Breslauer Straße 34-38
49803 Lingen/Ems**

Order of: **25 September 2008**

Certificate number: **27670801.001**

Sampling: **By client and shipping to the testing institute.**

Testing basis: **DIN 51130 (Edition 6/2004) and/or Data sheet BGR 181**
Testing of floor coverings – determination of the anti-slip properties – Workrooms and fields of activities with slip danger, walking method – ramp test

Testing result: **Medium angle of inclination**
Testing direction parallel to the profile grid **27,8°**
Testing direction crosswise to the profile grid **22,3°**

Evaluation: **Anti-slip property class = R 11**



SÄUREFLIESNER-VEREINIGUNG e. V.
INSTITUT FÜR WAND- UND BODENBELÄGE
Managing Director

Dr.-Ing. E. H. Nolting

Großburgwedel, 18 November 2008
Schu/Pp-ed

The testing result refers to the inspected material.
The test certificate is granted for the period of 5 years (relating to the date of issue).
Publications and duplications of the test certificate only permitted in an unabridged form.



Contact

Distribution / Service Hotline:

→ **Manufacturer**

BLASI GmbH – Carl-Benz-Str. 5-15 – D-77972 Mahlberg – Germany
tel.: +49 (0) 7822 / 893-0 info@blasi.info



your global partner for entrance solutions

Subject to technical modifications – Copyright © BLASI GmbH
n°121-6414094 – Manufacturer: BLASI GmbH – Carl-Benz-Str. 5-15 – D-77972 Mahlberg – Germany